

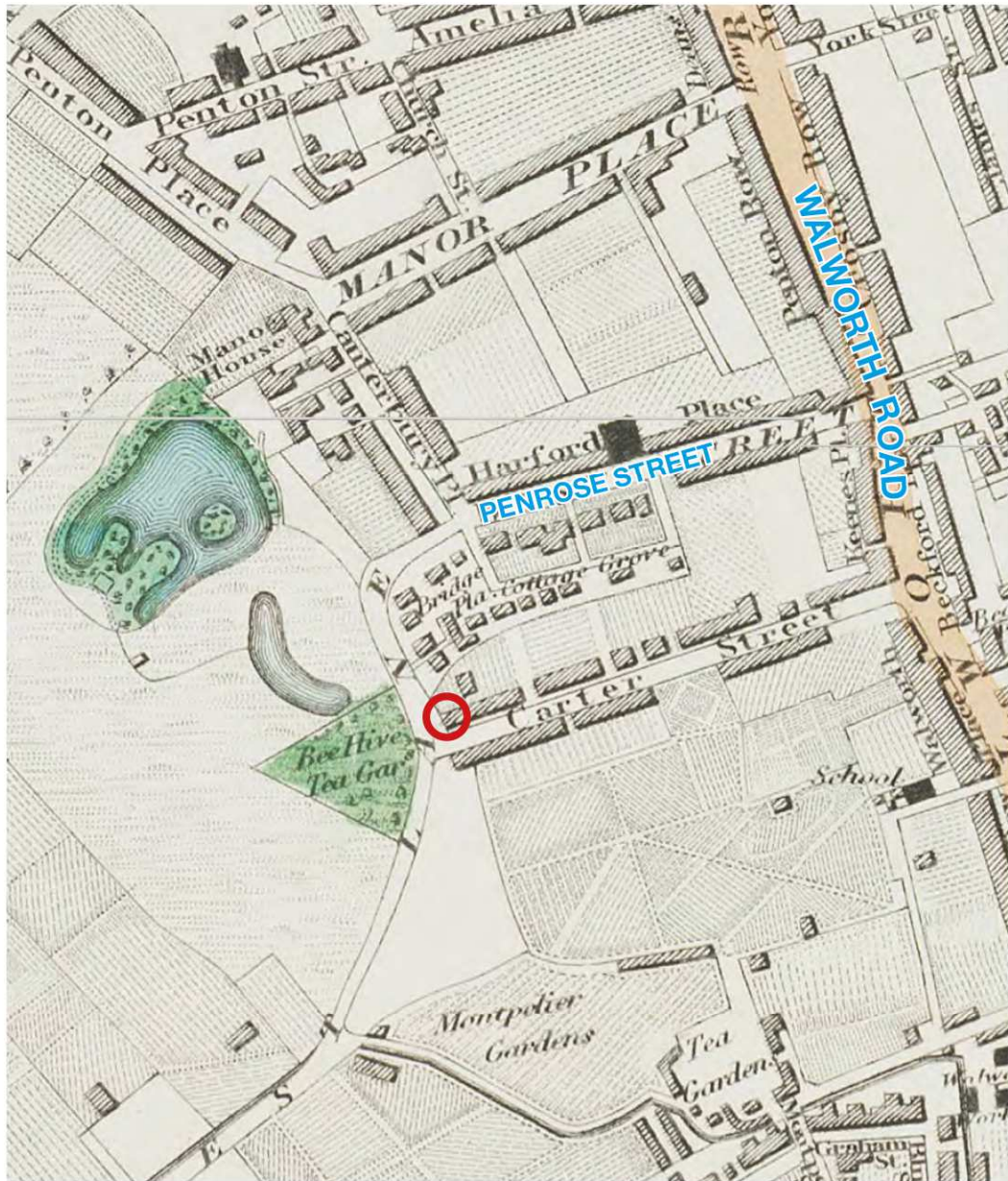
## **A Short History of the Beehive PH by Diana Cochrane**

According to the Story of Walworth, in the late C18th, "Mr Keen, a local landowner, and landlord of the Beehive Tavern, built a terrace of houses along the Walworth Road called Keen's Row." This is the terrace that runs from Carter Place to Sutherland Walk. It is not known where the Beehive Tavern was situated at this time, although Mr Keen was a wealthy individual because he built himself a large house and garden facing Walworth Road where the former police station in Carter Place is now located. His front garden became Carter Place Gardens which was not built over until 2012.

The current Beehive Pub was built around 1827 when Carter Street was formed. It included an acre of gardens which is marked as the "Bee Hive Tea Gardens" on the 1830 map. The pub and its gardens were linked by "a little wooden bridge."

The garden was renamed The Beehive Cricket Ground on the 1840 map, when the landlord Robert Groom called the tavern, "The Beehive and Cricketers". The Montpelier Cricket Club had been based at the nearby Montpelier tea Gardens from 1796 until they moved to play at the Beehive grounds in 1831. They played there until 1844 when the land was purchased by developers. The Montpelier Club had to find a new home for their club at the nearby Oval, where they are still based today.

The Beehive Pub has been serving the local community continuously in his location since 1827. Its survival is even more remarkable because everything around it was demolished after a World War 2 bomb exploded in Carter Street, resulting in the demolition of every building around it.



### 1830 Greenwood Map

A hand-drawn surveyed map of Walworth held at the Southwark History Library and Archive.

This shows:

- The Beehive Public House (RED CIRCLE)
- The Beehive Cricket Ground (GREEN AREA)
- Montpelier Tea Gardens
- Site to be used as The Royal Surrey Zoological Gardens (lake north of the Beehive Tea Gardens)




### 1840 Daine's Map

A hand-drawn surveyed map of Walworth held at the Southwark History Library and Archive.

This shows:

- The Beehive Public House (RED CIRCLE)
- The Beehive Cricket Ground (GREEN AREA)
- Montpelier Tea Gardens
- The Royal Surrey Zoological Gardens

**CRICKET**

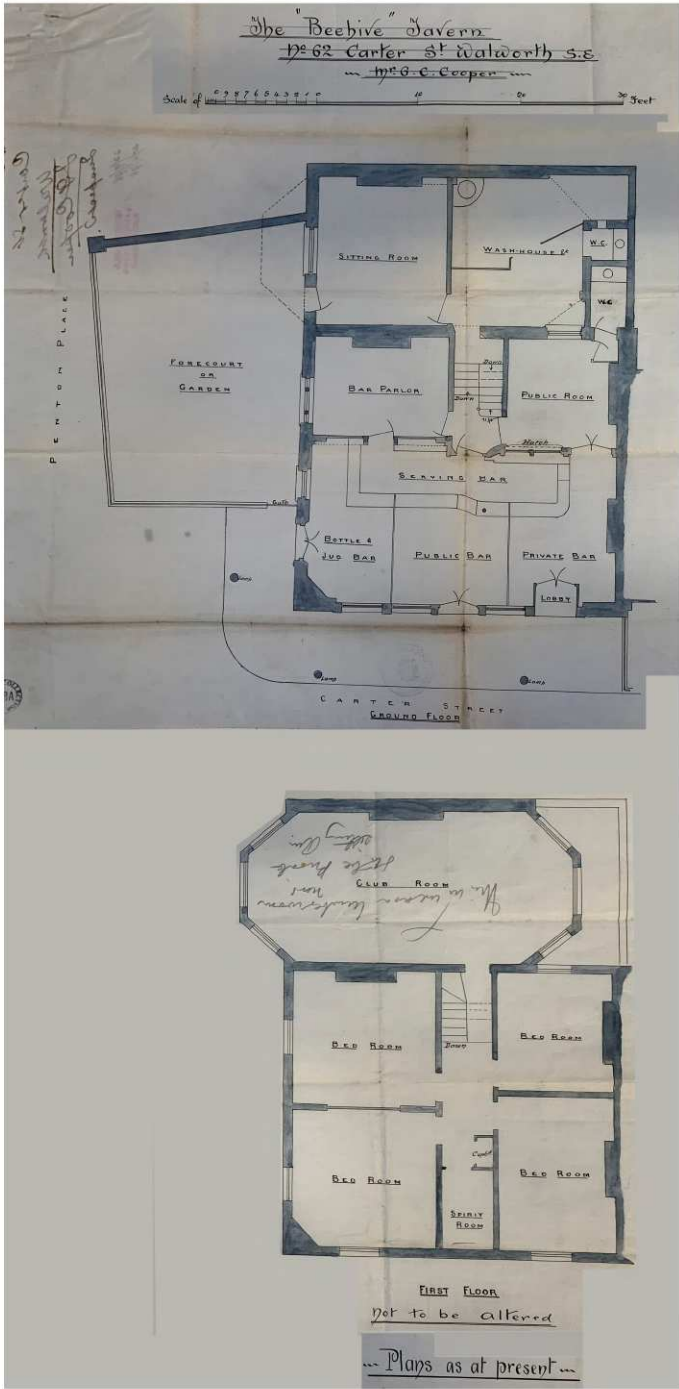


**A MATCH**  
 WILL TAKE PLACE ON  
**THURSDAY, AUG. 28th, 1848,**  
 AT  
**I. G. BRYANT'S,**  
**BEEHIVE GROUND**  
**WALWORTH,**  
 Near the Surrey Zoological Gardens,  
 BETWEEN ELEVEN GENTLEMEN OF THE  
**SLINGTON ALBION CLUB**  
 AND ELEVEN GENTLEMEN OF THE  
**SOUTH LONDON CLUB,**  
*Wickets to be pitched at Ten o'clock precisely.*

---

**ADMITTANCE SIXPENCE,**  
**WITH A REFRESHMENT TICKET.**

1843 poster advertising a cricket match on the Beehive Tea Gardens  
 Image from Walworth Inprint, held at Southwark History Library and Archive



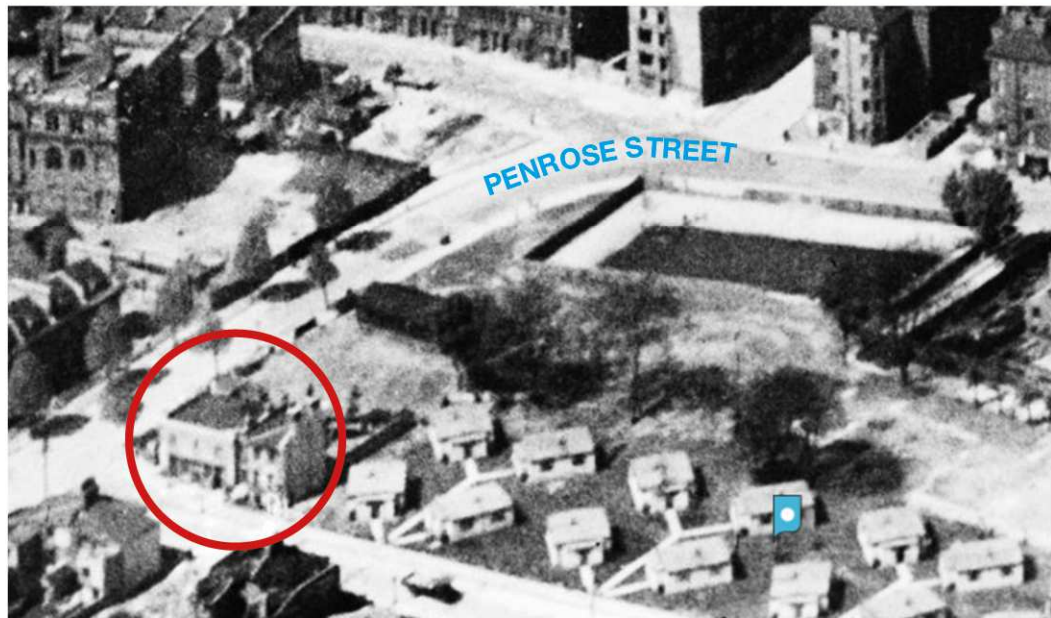
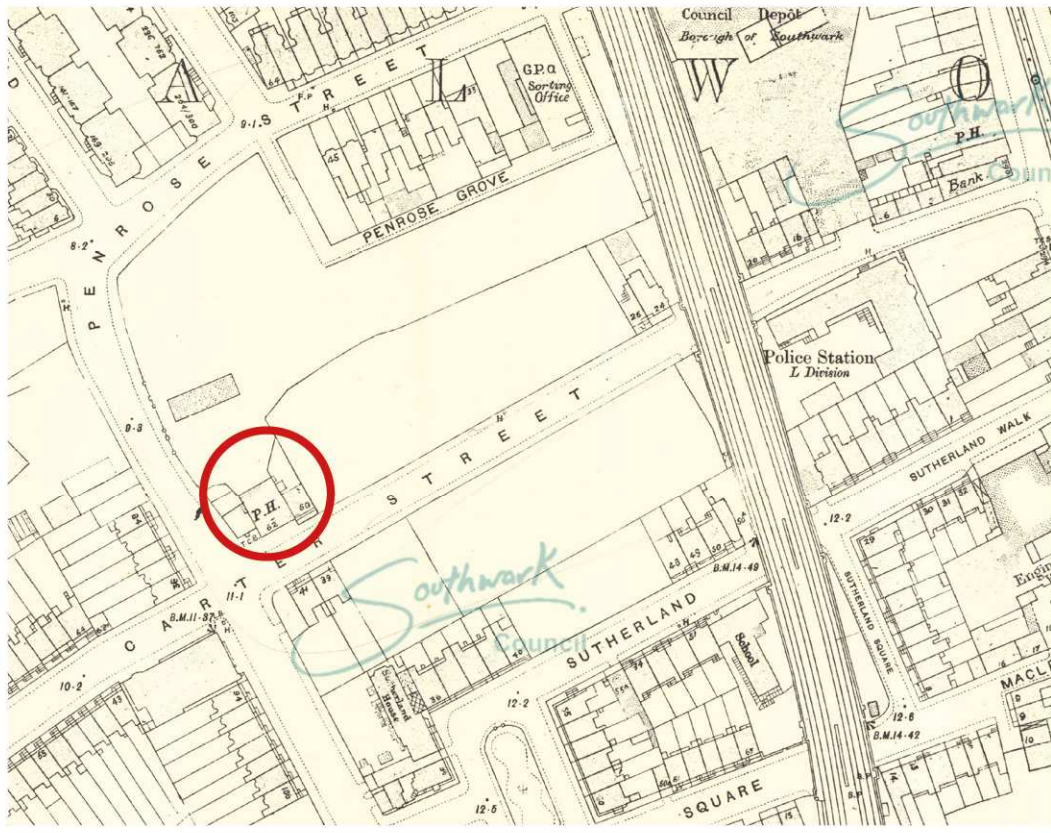
**1997 Interior plans of the Beehive**

Plans were submitted to the licensing authorities to make interior changes to the Beehive Pub.



**1939-1945 Bomb Damage Map**

This map shows a direct hit on Carter Street. Remarkably the Beehive PH survived (coloured yellow), while all of the buildings around it were demolished (coloured red, purple, black).



1947 Map & 1946 Aerial Photo (<https://www.britainfromabove.org.uk/en/image/EAW000541>)

- Shows the extent of World War II bomb damage around the Beehive Public House and postwar prefabs along Carter Street, now replaced by the Penrose Estate.